



Finding Information on **Landscape Design**

If you need assistance at any point in your research, please contact a reference librarian at nhtireference@ccsnh.edu or by phone at 603-271-7186.

To find books, CDs, and DVDs in the library

The **Library Catalog** can be accessed via the library's homepage:

www.nhti.edu/library

> Click on the On-Line Catalog button

(The catalog can also be accessed directly at: www.library.ccsnh.edu)

Search tips: Search for books in the library catalog (see also General Research Guide). Start with a keyword or subject search. Select Concord as your location. When you find an interesting book, look at the subject headings in the record.

By selecting any one of those links, you can refine your search to include all books with that particular subject heading. Be sure to write down shelf location and call number to locate the book.

Library	Shelf Location	Call Number	Item Status
Concord	General Collection	SB456 .S793 2010	Available

Keywords: annuals, flowering plants, borders, garden design, greenhouses, ground cover, hardscape, landscape gardening, leaves, parks, perennials, shrubs, trees, vines, water gardens

Browsing: You can also browse the shelves at the library. The books in the library are organized by the Library of Congress Classification system, which uses letters and numbers as a code for a subject. This code is referred to as the call number. The following LC classes will be helpful:

S-for Agriculture, SB- for Plant Culture, SD- for Forestry

Select NEW BOOKS available in our collection:

Frederick Law Olmsted: Essential Texts edited by Twombly SB472.4 .O46 2010

From Art to Landscape: Unleashing Creativity in Garden Design by Smith SB472.45 .S65 2010

Public Parks: The Key to Livable Communities by Garvin SB481 .G37 2011

Romantic Gardens: Nature, Art, and Landscape Design by Rogers et al. SB451 .R638 2010

So You Want To Be a Garden Designer: How to Get Started, Grow, and Thrive in the Landscape

Design Business by Howard SB472.45 .H69 2010

Tomorrow's Garden by Orr SB472.45 .O77 2011

World of Trees by Johnson QK475 .J646 2010

Select REFERENCE BOOKS available in our collection:

Book of Leaves: A Leaf-by-Leaf Guide to Six Hundred of the World's Great Trees
REF QK477.2.I4 C66 2010

Conifers for Gardens: An Illustrated Encyclopedia REF SB428 .B55 2007

Firefly Encyclopedia of Trees REF QK474.87 .F56 2005

Flora of the Northeast REF QK121 .M34 2007

Landscape Architectural Graphic Standards REF SB472 .H57 2006

Perennials: The Gardener's Reference REF SB434 .C37 2007

The Plant Finder: The Right Plants for Every Garden REF SB407 .P62 2007

Reserved Books

Go to the circulation desk to sign out books and other materials assigned by your class instructor. These resources are for use in the library only. Reserved books are identified in the library catalog as RESERVE COLLECTION – Please see Circulation.

Sample titles:

- *Bringing Nature Home: How You Can Sustain Wildlife with Native Plants*, 2009
- *Designing Gardens with Flora of the American East*, 2010
- *Energy-Wise Landscape Design: A New Approach for Your Home and Garden*, 2010

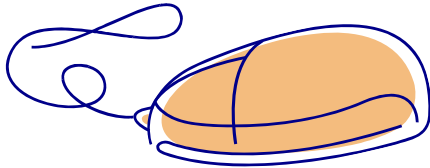
Magazines and Journals

The following print magazines and journals are available in the library but cannot be checked out. Articles may be scanned at the BookScan Station and emailed or saved to a USB drive. A coin-operated photocopier is also available. A list of all the magazines can be accessed from the library's homepage. Select Union List of Periodicals.

- *Garden Design*
- *Horticulture*
- *Landscape Architect and Specifier News*
- *Landscape Contractor*
- *Landscape Journal*
- *Mother Earth News*
- *Southern Living*
- *Yankee*

Electronic Resources

Off-campus access to electronic resources is restricted to members of the NHTI community. Use these instructions to access electronic resources off-campus.



Logging in to Electronic Resources Off-Campus:

Students:

If your email address is **jdoh123@students.ccsnh.edu**
then your username is **jdoh123**

Faculty and Staff:

If your email address is **jdoh@ccsnh.edu**
then your username is **jdoh**

eReference

Credo Reference is a multidisciplinary reference collection including directories, encyclopedias, fact or reference books and full-text books.

Sample titles:

- *Concise Encyclopedia of Plant Pathology*, 2004
- *Encyclopedia of Ecology & Environmental Management*, 1998
- *Handbook of Vegetable Pests*, 2001
- *The Macquarie Dictionary of Trees & Shrubs*, 1986

eBooks

eBooks on EBSCOhost® is an online collection of ebooks. Search by topic or title and view the full text of digital books. Create notes, download to portable devices, save, cite and email options available.

Sample titles:

- *Color Drawing: Design Drawing Skills and Techniques for Architects, Landscape Architects, and Interior Designers* by Doyle, 1999
- *The Explorer's Garden: Rare and Unusual Perennials* by Hinkley, 1999
- *Opportunities in Landscape Architecture, Botanical Gardens, and Arboreta* by Camenson, 2007

EBRARY is an online e-book database listed on the Library's Database Page. The ebrary collection contains thousands of books that can be accessed off campus 24/7.

Sample titles:

- *Culinary Herbs for Short-Season Gardeners* by Small and Deutsch, 2001
- *Dictionary of Landscape Architecture and Construction* by Christensen, 2005
- *Perfect Phrases in Spanish for Gardening and Landscaping* by Yates, 2008

eJournals

Landscape Online www.landscapeonline.com

Article Databases

The NHTI Library subscribes to comprehensive article databases: **EBSCOHost**, **JSTOR** and **ProQuest**. All are accessible via the library homepage. The lists below are just a selection of the many titles available in these Databases. If you are looking for a particular title check the publications list in each database. **All databases may be searched by topic keywords.**

EBSCOHost Provides online access to articles, e-books, and reference books. Create your personal MyEBSCOhost account to save and organize your research with folders, save preferences, save and retrieve search history.

Sample titles:

- *American Nurseryman*
- *Landscape Management*
- *Landscape Research*
- *Landscape Trades*

JSTOR Contains more than a thousand academic journals and over 1 million images, letters, and other primary sources. Main focus is arts and humanities. Register a MyJSTOR account in order to save, email and export citations.

Sample titles:

- *American Fern Journal*
- *Kew Bulletin from the Royal Gardens at Kew*
- *Weed Technology*

PROQUEST Access journal, magazine, and newspaper articles. Also contains e-books. Primary subject focus is news, science, and business. The My Research feature lets you save documents you find useful and view details from your searches during your ProQuest session. You can then print a bibliography and email or export several documents at once.

Sample titles:

- *Ecology, Environment & Conservation*
- *Garden Design*
- *Landscape Ecology*
- *Plant Ecology*

eResource

Hortiscopia Pro V (Use the designated computer in the Library Lab.)

A landscape design program that includes 14,000 color pictures and descriptions of 4,150 ornamental plants, both woody and herbaceous. Contains information on hardiness zones, height, form, exposure and leaf shape. Multiple photos with every plant entry.

Internet Resources

American Society of Landscape Architects www.asla.org

Includes online access to *LAND*, the landscape architecture news digest, as well as career resources, professional meetings, and events.

Arnold Arboretum www.arboretum.harvard.edu

Owned by Harvard University, this is the oldest public arboretum in North America and one of the leading centers for plant study. It is open to the public, serves as an outstanding example of a public garden, and offers classes and workshops.

Brooklyn Botanical Garden www.bbg.org

Established in 1910, this 52 acre garden teaches city residents about urban gardening and landscaping. The Brooklyn Botanical Garden conducts plant research, preserves seeds, educates the public and maintains a database of specimens within the garden. The website includes videos of various display gardens and publications for the gardener.

Massachusetts Horticultural Society www.masshort.org

A membership organization, the Society organizes the New England Spring Flower Show and supports the Elm Bank Horticulture Center. A variety of interesting display gardens at Elm Bank encourages the public to appreciate plants and gardens.

National Invasive Species Information Center www.invasivespeciesinfo.gov

USDA Library reference gateway to information, organizations and services about invasive species. Offers a US map to find state-specific lists of invasive plants and insects.

Native Plant Information Network wildflower.org/explore/

The mission of this site is to educate North Americans about native plants and encourage their conservation. Includes an image database of 22,575 plants with detailed data. The website also includes a list of native plant species recommended for New Hampshire planned landscapes.

UConn Plant Database www.hort.uconn.edu/Plants/

The database contains photographic and textual information on 450 trees, shrubs and vines that are useful for landscaping design.

Associations

New Hampshire Landscapers Association www.nhlaonline.org

Promotes professional development for people who work in this field. Encourages responsible environmental and ecological practices.

NH Display Gardens

Fuller Gardens, North Hampton, NH www.fullergardens.org

A display garden open to the public. An outstanding example of an American estate garden, the Fuller Gardens include rose bushes, a formal English perennial border, Japanese gardens and a conservatory.

The Fells Estate and Gardens, Newbury, NH www.thefells.org

The summer home of American writer and diplomat, John M. Hay, offers a 100 foot perennial border, rock garden, rose terrace and other gardens. Adjacent to the John Hay National Wildlife Preserve on Lake Sunapee.

Online Career Resources

Career Library features Industry Career Guides, Career Profiles, Job Application and Interview Advice. Career Library can be accessed through the Databases page.

Learning Express Access is through the NHTI Library Databases page. Online tutorials in all NHTI skill-areas. Includes assessment, skill-building, and test preparation. Learning Express provides professional hand scoring of writing and provides targeted direction for further study. Offers test preparation for GED, AP, SAT, ACT, GRE, GMAT, MCAT, TOEFL, ASVAB, civil service, and a full range of professional licensing exams. Available 24/7 from anywhere. Free registration required for access.

