

# Finding Information on Early Childhood Education

If you need assistance at any point in your research, please contact a reference librarian at [nhtireference@ccsnh.edu](mailto:nhtireference@ccsnh.edu) or by phone at 603-271-7186.

## To find books, CDs, and DVDs in the library

The **Library Catalog** can be accessed via the library's homepage:

[www.nhti.edu/library](http://www.nhti.edu/library)

> **Click on the On-Line Catalog button**

(The catalog can also be accessed directly at [www.library.ccsnh.edu](http://www.library.ccsnh.edu))

**Search tips:** Search for books in the library catalog (see also General Research Guide). Start with a keyword or subject search. Select Concord as your location. When you find an interesting book, look at the subject headings in the record.

By selecting any one of those links, you can refine your search to include all books with that particular subject heading. Be sure to write down shelf location and call number to locate the book.

Library	Shelf Location	Call Number	Item Status
Concord	General Collection	LB1119 .H25 2006	Available

**Keywords:** day care, kindergarten, preschool, special education, child development, classroom management, art, activities

**Browsing:** You can also browse the shelves at the library. The books in the library are organized by the Library of Congress Classification system, which uses letters and numbers as a code for a subject. This code is referred to as the call number. The following LC classes will be helpful to you: **BF – Psychology, HQ767.8-792.2 – Children in the family, LB 1101-1602 – Child study and early education**

### **Select NEW BOOKS available in our collection:**

*Addressing Challenging Behaviors in Early Childhood Settings* by Denno et al. LB1060.2 .D46 2010  
*Art & Creative Development for Young Children* by Fox & Schirmacher LB1139.5 .A78 F69 2012  
*Art of Storytelling: Telling Truths through Telling Stories* by Spaulding LB1042 .S675 2011  
*Beginnings and Beyond* by Gordon and Browne LB1139.23 .G663 2011  
*Classrooms All Young Children Need* by Cooper LB1139.23 .C66 2009  
*Observing Development of the Young Child* by Beaty LB 1115 .B32 2010

### **Select REFERENCE BOOKS available in our collection:**

*A to Zoo: Subject Access to Children's Picture Books* REF Z1037 .L715 1998  
*Concise Encyclopedia of Special Education* REF LC4007 .E53 2002  
*Encyclopedia of Education* REF LB15 .E47 2003  
*The Encyclopedia of Learning Disabilities* REF LC4704.5 .T86 2006  
*Handbook of Child Psychology* REF BF721 .H242 2006  
*Learning Theories A to Z* REF LB15 .L4695 2002

The library has a large collection of picture books and juvenile literature located near the reference section.

### Select DVDs and CDs available in our collection:

*Developmental Phases Before and After Birth* DVD BF720.S44 D484 2004

*How Relationships are Formed* DVD BF720.S44 H69 2004

*The Psychological Development of the Child* DVD BF720.S44 P793 2004

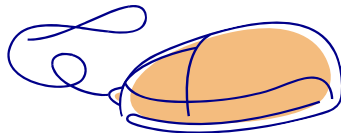
## Magazines and Journals

The following print magazines and journals are available in the library but cannot be checked out. Articles may be scanned at the BookScan Station and emailed or saved to a USB drive. A coin-operated photocopier is also available. A list of all the magazines is can be accessed from the library's homepage. Select Union List of Periodicals.

- *Autism Spectrum Quarterly*
- *Childhood Education*
- *Exceptional Children*
- *Exchange*
- *Focus on Autism and Other Developmental Disabilities*
- *Home Education Magazine*
- *Ladybug*
- *Teaching Tolerance*
- *YC: Young Children*
- *Young Exceptional Children*
- *Zero to Three*

## Electronic Resources

Off-campus access to electronic resources is restricted to members of the NHTI community. Use these instructions to access electronic resources off-campus.



### **Logging in to Electronic Resources Off-Campus:**

#### **Students:**

If your email address is **jdjoe123@students.ccsnh.edu** then your username is **jdjoe123**

#### **Faculty and Staff:**

If your email address is **jdjoe@ccsnh.edu** then your username is **jdjoe**

**In both cases your password is your email password.**

## eReference

**Credo Reference** is a multidisciplinary reference collection including directories, encyclopedias, fact or reference books and full-text books.

Sample titles:

- *Encyclopedia of Special Education: A Reference for the Education of the Handicapped and Other Exceptional Children and Adults*, 2007
- *Handbook of Research on the Education of Young Children*, 2006
- *Key Concepts in Early Childhood Education and Care*, 2006

**Gale Virtual Reference** is a multidisciplinary database of directories, encyclopedias, fact or reference books; full-text periodicals/journals; full text newspaper and other news sources; full-text ebooks and historical collections in digital format. (Password- conc90075)

Sample titles:

- *Encyclopedia of Education*, 2003
- *The Gale Encyclopedia of Psychology*, 2001
- *Learning and Memory*, 2003

## eBooks

**eBooks on EBSCOhost®** is an online collection of ebooks. Search by topic or title and view the full text of digital books. Create notes, download to portable devices, save, cite and email options available.

Sample titles:

- *Early Years Play and Learning: Developing Social Skills and Cooperation* by Broadhead, 2004
- *Measuring Performance: The Early Childhood Educator in Practice* by Elliot, 2002
- *Serious Players in the Primary Classroom* by Wassermann, 2000

**EBRARY** is an online e-book database listed on the Library's Database Page. The ebrary collection contains thousands of books that can be accessed off campus 24/7.

Sample titles:

- *Child Development from Birth to Eight: A Journey Through the Early Years* by Robinson, 2008
- *Supporting Transitions in the Early Years* by Brooker, 2008
- *Understanding Early Childhood: Issues and Controversies* by Penn, 2008

## eJournals

eJournals are available online. Access by selecting the eJournals link on the NHTI Library homepage.

- *Everyday Teaching, Learning, Caring*

## Article Databases

The NHTI Library subscribes to comprehensive article databases: **EBSCOHost**, **JSTOR** and **ProQuest**. All are accessible via the library homepage. The lists below are just a selection of the many titles available in these Databases. If you are looking for a particular title check the publications list in each database. **All databases may be searched by topic keywords.**

**EBSCOHost** Provides online access to articles, e-books, and reference books. Create your personal MyEBSCOhost account to save and organize your research with folders, save preferences, save and retrieve search history.

Sample titles:

- *Early Child Development & Care*
- *Infant & Child Development*
- *Topics in Early Childhood Special Education*

**JSTOR** Contains more than a thousand academic journals and over 1 million images, letters, and other primary sources. Main focus is arts and humanities. Register for a MyJSTOR account in order to save, email and export citations.

Sample titles:

- *Child Development*
- *Family Relations*
- *Learning Disability Quarterly*

**PROQUEST** Access journal, magazine, and newspaper articles. Also contains e-books. Primary subject focus is news, science, and business. The My Research feature lets you save documents you find useful and view details from your searches during your ProQuest session. You can then print a bibliography and email or export several documents at once.

Sample titles:

- *Child & Youth Care Forum*
- *Childhood Education*
- *Early Childhood Education Journal*
- *International Journal of Early Childhood*

## Internet Resources

### **Ask the Preschool Teacher** [www.askthepreschoolteacher.com](http://www.askthepreschoolteacher.com)

Question and answer forum with a panel of early childhood education experts.

### **Earlychildhood NEWS** [www.earlychildhoodnews.com](http://www.earlychildhoodnews.com)

Website created to provide resources for parents and teachers of children from infancy to age eight. The website contains activities, crafts, music, and news.

### **The Educator's Reference Desk** [www.eduref.org](http://www.eduref.org)

The Educator's Reference Desk builds on over a quarter century of experience providing high-quality resources and services to the education community. This website includes 2,000+ lesson plans, 3,000+ links to online education information, and 200+ question archive responses.

### **Family Resource Connection** [www.state.nh.us/nhsl/frc/directory.html](http://www.state.nh.us/nhsl/frc/directory.html)

The Family Resource Connection at the NH State Library provides information for families and educators.

### **Federal Resources for Educational Excellence** [www.free.ed.gov](http://www.free.ed.gov)

The US Department of Education's FREE (Federal Resources for Educational Excellence) provides access to a collection of electronic educational resources produced by forty-nine different federal agencies.

### **Idea Box** [www.theideabox.com](http://www.theideabox.com)

Contains resources for planning activities including crafts, music, games, and recipes.

### **UNH Cooperative Extension** [www.extension.unh.edu/Family/Family.htm](http://www.extension.unh.edu/Family/Family.htm)

A site that offers parenting information, articles about work/family balance, family care giving and family stress. Family and consumer upcoming events calendar.

### **Whole Child** [www.pbs.org/wholechild/](http://www.pbs.org/wholechild/)

Provides information on children's developmental stages from birth to age five. This website also includes a section for early childhood educators with articles on a variety of topics including daily routines, emotional health, social competence, and literacy emergence.

## Associations

### **National Association for the Education of Young Children-** [www.naeyc.org](http://www.naeyc.org)

This organization provides information for teachers, families and students about a wide range of early childhood topics and issues.

## Online Career Resources

**Career Library** features Industry Career Guides, Career Profiles, Job Application and Interview Advice. Career Library can be accessed through the Databases page.

**Learning Express** Access is through the NHTI Library Databases page. Online tutorials in all NHTI skill-areas. Includes assessment, skill building, and test preparation. Learning Express provides professional hand scoring of writing and provides targeted direction for further study. Offers test preparation for GED, AP, SAT, ACT, GRE, GMAT, MCAT, TOEFL, ASVAB, civil service, and a full range of professional licensing exams. Available 24/7 from anywhere. Free registration required for access.